



# Museum Matters

Volume 3, Issue 4

December 2019

IPSWICH HOSPITAL MUSEUM Inc.

Committee :

Chairman: M. Parcell

Secretary: J. Kingston

Treasurer: C. Marre

## Chairman's Chatterings

Christmas is meant to be the most wonderful time of the year. The most exciting time of the year. Most of us will be looking forward to spending the Christmas period with family and friends, but sadly it is also a very busy time for our hospitals and hospital staff. Historically speaking, the types of presentations to hospitals over the years hasn't changed all that much (albeit some of the terminology has). For instance, unfortunately for some people, Christmas holidays are not something to look forward to. Many people may find themselves alone at this time of year and feelings of loneliness and abandonment can be exacerbated. This has led to hospitalisations for depression and self-harm. Interestingly, during the Victorian gold rush of 1860s, Victoria had the highest rate of insanity in the world, peaking during the Christmas period of 1861. Trauma during the summertime is also something that has remained static throughout the years with only the cause of the trauma changing. In the early period of the 1900's trauma from horse accidents was the most common. Today this has been replaced with accidents from dirt bikes and back yard swimming pools being consistently high during this time of the year. During this Christmas period I trust that you stay safe and enjoy this wonderful time of refreshment with those you love most.

## Inside this issue:

Last Remnant	2
How old is the Poinciana?	2
Christmas Gifts	3
Christmas Celebrations	3
Shady Money	3
Sunshine League	3
Not Welcome Here	4
Word War II Research	4
Community Engagement	4

## The Royal Visit

Ipswich Hospital's only Royal visitor to date arrived on a warm summer day 75 years ago.

The Duke of Gloucester was here to lay the foundation stone for the new children's Sunshine Ward.

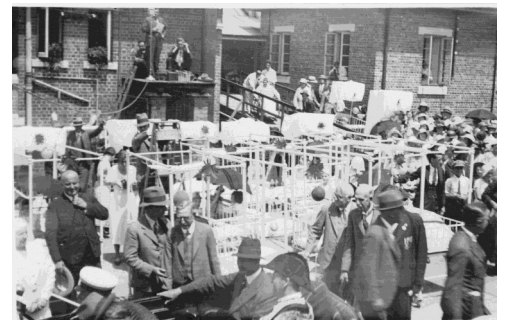
His Royal Highness Prince Henry William Frederick Albert, Earl of Ulster, Baron Culloden was the third son and fourth child of King George V and Queen Mary. He was the brother of King George VI and Edward VIII (who abdicated in 1936).

The Duke had earlier been welcomed to Ipswich at a ceremony in Queens Park.

Queensland Times on December 4, 1934 described the scene at the hospital as "one of brightest welcome with rippling pennants, beautiful flower gardens and green lawn. Thousands of people greeted the Royal arrival and facing the front steps of the new arrival were white beds with crippled and sick children holding umbrellas to stem the sun's rays."

In his speech welcoming the Duke, Mr J.G. Bishop (President of the Hospital Board of Management) said that the Board and members of the Sunshine League were extremely grateful for the honour he conferred by laying the foundation stone. He talked about the great work done by the young people of the Sunshine League and that many children had travelled 40 and 50 miles to attend the ceremony.

With a presentation mallet made of West Moreton cedar and specially inscribed, the Duke declared the foundation stone "well and truly laid". Mr Bishop, on behalf of the Sunshine League members, presented his Royal Highness with a serpentine-fronted casket of West Moreton cedar, padded with gold and white, the colours of the Sunshine League, and a Sunshine League badge. The Duke visited the young patients and discussed the work of the Sunshine League with Mr Bishop before leaving amidst rousing cheers .



The Duke of Gloucester arriving at Ipswich Hospital surrounded by dignitaries and greeted by staff and patients, their beds placed outside for the ceremony.



Nurses forming a guard of honour for the Duke of Gloucester's visit.

The Duke of Gloucester (31 March 1900—10 June 1974) married Lady Alice Montagu Douglas Scott in 1935 and served as Governor General of Australia from 1945 to 1947, the only member of the British Royal family to hold this post.

## Last Remnant

Is this the oldest surviving remnant of the original Ipswich Hospital and Benevolent Asylum?

BUNYA BUNYA (*Araucaria Bidwillii*)  
Court Street

When 5 acres of land was granted by the government of New South Wales in 1856 to build the Ipswich Hospital, the native vegetation was mostly removed. The original 2 story building was completed in 1860, and early images of the site show a very basic building on a very bare block of ground.

On 22<sup>nd</sup> June 1865 the Hospital Committee “Resolved that the Secretary write... to Mr Hill at the Botanical Gardens, Brisbane respecting a donation of Trees etc. for planting the boundaries of the Hospital”.

On 13<sup>th</sup> July 1865 “The Sec. presented a list of plants furnished by the Botanical Gardens, Brisbane.”

That list is preserved in the State Archives as follows:

1. *Araucaria excelsa*. (*Norfolk Island Pine*) *Syn. Heterophylla* 50-60 metre tree
2. *Araucaria Bidwillii* (*Bunya Bunya*) 2 plants 30-40 metre tree
3. *Cupressus torulosa* *Himalayan Cypress* 45 metre tree
4. *Cupressus Goveniana* *Californian Cypress* 50 metre tree
5. *Gardenia Thunbergia* *Tree Gardenia*, *South African Buffelobol*, small tree
6. *Schotia tamarindofolia* *Parrot Tree*
7. *Russelia juncea*. 2 plants *Fire Cracker plant*, *Coral plant*
8. *Russelia sarmentosa* 2 plants *Red Rocket*, *fire cracker plant*
9. *Lagerstromia indica* 3 plants *Crepe Myrtle*

10. *Jasminum Tubescens* 3 plants *Jasmine Arborescens*, *Tree Jasmine*

11. *Cestrum aurantiacum* 2 plants *Orange Cestrum*, *Orange jessamine*.

12. *Holmskioldia sanguinea* 2 plts. *Chinese hat, cup and saucer plant, mandarins hat,*

13. *Nandina domestica* 2 plts *Sacred Bamboo*

14. *Ficus elastica* 3 plts *India Rubber*

15. *Poinsettia pulcherrima* 6 plants *Euphorbia pulcherrima*

16. *Aloe Arborescens*

17. *Yucca aloifolia* *Aloe yucca, dagger plant, Spanish bayonet*

18. *Thea Bohea* 5 plts *Black Tea, Camellia sinensis*

19. *Virburnum Tinus* (*Laurestinus*)

20. *Passiflora edulis* *passionfruit*

21. *Duranta Plumieri* *Golden dew drop*

22. *Bambusa arundinacea* *Bamboo cane, Giant thorny bamboo, spiny bamboo*

### Roses.:

23. *Madame Laffay*

24. *Lady Fitzharris*

25. *Bouquet de flore*

26. *Louise Odier*

27. *Jupiter*

28. *Belle Emilie*

### Verbenas:

29. *Mrs. Glenn* 2plts

30. *Amy Robsart* 2plts

31. *O'Hara Burke* 2plts

32. *Bridesmaid*

33. *Lilac Beauty*

34. *Foxhunter*

35. *purple (unnamed)*.

36. *Chrysanthenums* (12 varieties)

As photographs show a mature tree in the early 1900s, we believe the Bunya Pine on

Court St. is the sole survivor, making it 155 years old.

The original hospital building was extensively modified over the years and was finally demolished in 1984, so, apart from the land itself, this tree is the oldest relic of the hospital.

A past nurse recalls that a falling cone caused significant damage to a parked car in the 1970s.

The changes that have occurred around this tree are truly amazing. Should it survive to old age (about 2365) who can imagine the world it will be living in?

*A native of South East Queensland, these trees bear cones weighing 18kg. holding many large 4cm edible nuts. They were of great cultural significance for the first peoples of this region.*

*They grow slowly, begin bearing cones after about 14 years, reaching a height of 50 metres, trunk diameter of 1.5 metres, and living for about 500 years.*



The information, for this article by Ross Blinco, has been gathered from a variety of sources including: Ipswich Hospital Records and Archives held by the Museum and the State Archives; Picture Ipswich and the Ipswich Art Gallery; “TROVE” newspaper archives, particularly the North Australian, The Queensland Times, and the Moreton Bay Courier; “THE IPSWICH HOSPITAL 1860-1991” Ross Patrick, Boolarong Publications.

## How old is the Poinciana tree?

The huge poinciana tree in front of the Jubilee Building on the Court Street side of the hospital has provided shelter, shade and a peaceful retreat for many past and current members of staff, patients and visitors for many years.

But how old is it? We would love to hear if anyone knows when it

was planted or has any special memories surrounding the tree.

Currently the area under the tree is used as an evacuation point for some sections of the hospital and also contains a memorial garden for early pregnancy loss. A service is held for families of these angel babies each month.



## Christmas Gifts

Locals were generous to the hospital as noted by the Hospital Board of Management in December 1933. It acknowledged with thanks:

Two bags potatoes (W.H. Grams, Grantham); 95 dozen eggs ("Christmas Rose", Ma Ma Creek); parsley (per Uncle William); magazines (A.G. Simpson, Basin Pocket); parsley (Mrs Williams); carrots and beetroot (Mrs Sanewsakti, Mugrave St); bag vegetables (Mr Lobegelger, Radford); three bags beans (F.E. Fels, Harrisville); 1 dozen jam bottles, medicine bottles, glass water jug, two tumblers and a feeding cup (Mrs W. Bailey, Mutdapilly); 18 dozen eggs (Glamorgan C.W.A.); eggs (Mrs Cook, Laidley); bag fruit (Mrs Elliott); two bags potatoes (Miss G. Clarke,

Thornton); one bag marrows (J.Boettcher, Marburg); cucumbers and peaches (Mr Thorn); comics (Edna and Valmat Collett, Rosewood); eggs (Mrs Hertwick, Mt Marrow); one bag onions (J. Simpson); one bag beans and tomatoes (Mrs M. Fairley, Walloon); two dozen eggs (Ipswich and District Poultry Club); books ("Dimples", Valmai Collett, Mrs R. Wilkinson, Dinmore); one case peaches (per Uncle William); carrots and cabbages (Mrs A.M. Smith. Booval); 62 pillow slips (Blackstone Welsh Church); medicine (J.Imhoff, Flinders); one bag cabbage (Mr V.R. Wallin, Ropeley East). The following gifts were received from "Queensland Lass", Coleyville: 53 fowls; three sacks potatoes; three sugar bags potatoes; a bag pumpkins; one bag of marrows and pumpkins; one bag of cabbages; one bag

of cabbages, carrots and turnips; one bag each of beans, lettuce, cucumbers and lemons; case of cucumbers; one packet eschallots. The Brassall Methodist Sunday School sent eggs, beetroot, groceries, fruit, cabbages, potatoes, tomatoes, mint, pumpkins, marrow and beans.

Acknowledging these gifts and voicing the board's thanks, the President (Mr J.G. Bishop) remarked: "I think we should send our compliments to 'Queensland Lass'. Mr Watson" "We'll not need to get any "chooks" for Christmas now. That will be a very material saving. The President: "I think the girl who collected all these gifts has done remarkably well. Dr Trumpy recalled that "Queensland Lass" had made similar collections for Christmas over the last few years.

## Christmas Celebrations



Medical and Nursing staff, Christmas Day 1958.

L to R Back: unknown, Joyce Jackson, Dr Maurice Heiner, Dr Trumpy, Matron Wilcox, Mrs Trumpy, Dr Tom Acheson, Margaret Harper.

Sitting: Lillian Wardrop, unknown, Beth Opperman, Muriel Brennan, Marjorie Barnett (Dep. Matron), Dell Schultz, unknown.

(Photo courtesy Joyce Jackson)

## Shady Money

Funds for the first Ipswich Children's Hospital in 1887 came from one unusual source and caused consternation to the Hospital committee.

The "Ladies of Ipswich" attended a lecture, to aid the hospital appeal, by Edith O'Gorman Auffrey, known as the "The Escaped Nun", on her experiences as a former nun .

The hospital committee then advertised that the lecture was not authorised.

One subscriber, Thomas B. Cribb, protested the actions of the committee in a letter to the editor. He asserted that the offerings of those who attended the lecture were not more soiled than the money which the committee received from bets or fines of profane swearers, drunkards, etc. yet he did not remember having seen any advertisement from the committee that they had no sympathy with such contributions.

It appears that the money from the lecture was eventually accepted despite the scruples of the committee. The rest of the funding for the ward came from more orthodox sources such as church collections.

## Sunshine League

In his address at the laying of the foundation stone of the new Sunshine Ward in December 1934, the President of the Hospital Board of Management, Mr J. G. Bishop, mentioned three outstanding members of the Sunshine League, "Nil Desperandum" (Lady of the League), "Lorna Doone" and Nellie Webb.

"Miss Webb joined the League in June 1927, shortly after her seventh birthday. During the ensuing seven years she has collected continuously and to date has returned the magnificent total of 125 collecting cards. Her subscriptions amount to 360 and her collections to £161/12/4.

"Lorna Doone of Mt Marrow, joined the league in the first year of its existence. She has organised 3 Sunshine evenings for hospital funds, and with collections her total has reached the excellent figure of £300/8/5.

"Nil Desperandum has been responsible for collections totalling £200/2/1.

"The efforts of these three girls, with Government endowment, have been the means of the hospital benefiting to the extent of £1642 at the present rate of endowment. Reckoning endowment on the amounts contributed before it was decreased, the sum is nearly £2000. All three members are still actively interested in the League.

"The efforts of these three girls, plus Government subsidy, makes a total of over £2000. I merely mention these three to show the amount of work that has been done by the young people, especially when you consider that most of the collections are very small, ranging from one penny to sixpence.

"The hospital is pleased to encourage these young people as such labour of love cultivates a spirit of service, and thoughtfulness for those who are less fortunate than themselves and require the services of the hospital."

### Latest Exhibit:

*Pestilence, plagues, poulitices, poxes, pustules and pyrexias —*

**The Infections, Epidemics and Fevers of Ipswich**

**Open: Wednesdays  
9 am– 12 noon or  
by appointment for groups**

Location:  
Ground floor, Jubilee Building,  
Ipswich Hospital Campus,  
Adjacent to Court Street  
Ipswich



**FREE ENTRY**



### Not Welcome Here

How times have changed.

Patients who were not welcome at the Ipswich Hospital in 1911: those who suffered from severe psychiatric illness, epilepsy or alcoholism were refused admission.

Dr Thornton, the medical superintendent claimed that to treat such patients was a threat to other patients in the hospital.

In 1911 he requested the board to change the

hospital rules as follows:

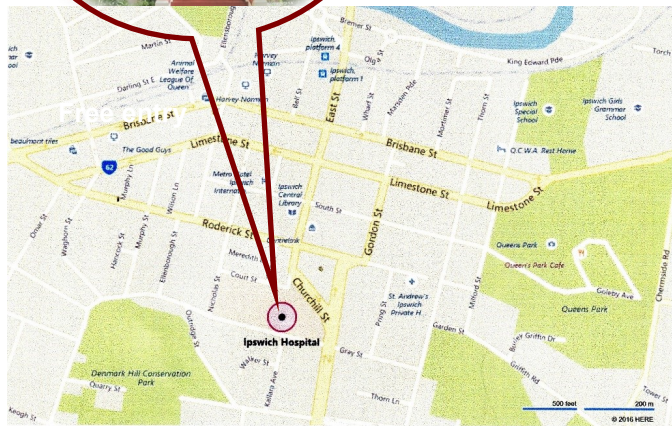
*“No person insane or suffering from venereal, epileptic or incurable disease, no person suffering from delirium tremors, and not person who is intoxicated shall be admitted to the hospital except in the case of an accident or for the purpose of a surgical operation; but the resident surgeon shall use discretionary power to admit such prohibited cases, subject to approval of or confirmation of the Board of Management.”*

Interested? -  
join us as a volunteer

**Ipswich Hospital  
Museum Inc**



**LOCATION:  
Ipswich Hospital  
East St Entrance**



### World War II Research

Museum volunteers are compiling a history of Ipswich Hospital doctors, nurses and ancillary staff who served during the Second World War. Can you help us with any information or family history to help our research?

### Community Engagement

The Museum currently has a display of the History of Birthing at the Ipswich Library. This was mounted in September and will run until the end of December.

Five members of the Mogill Historical Society visited the museum on 6 November.

### Christmas Closure

The Museum will be closed from 11 December and reopen on 8 January.

We would like to wish everyone a very Merry Christmas and Happy New Year. Please stay safe, happy and healthy and we hope to see you in 2020.



In the shade of the poinciana tree

### CONTACT US:

www.ipswichhospitalmuseum.com.au  
Email: info@ipswichhospitalmuseum.com.au  
Phone: 0460683677



Friends of Ipswich Hospital  
Museum

Please note new phone number above



Children’s Ward marble-top cabinet decorated for Christmas 2019